

# MARONDA *Homes*



*Victorian Water Table Brick Front with Covered Porch and 2 Car Garage*



*Partial Brick Front with Covered Porch and 2 Car Garage*



*Siding Front with 2 Car Garage*



*Water Table Brick Front with 2 Car Garage*

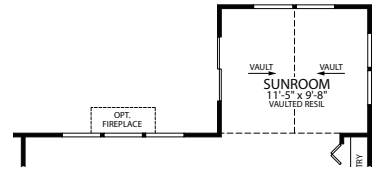
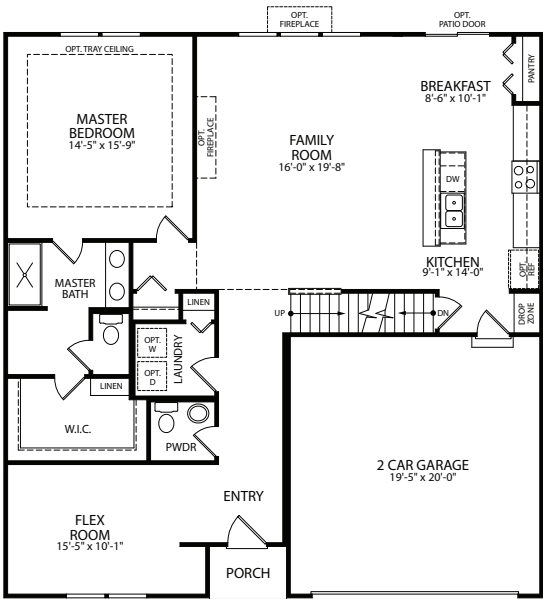
## THE KNOXVILLE

Elevation A Americana Home Collection

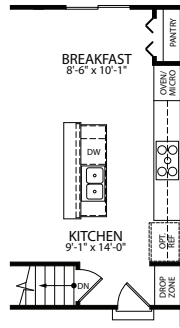
DREAM. BUILD. *Live.*

Quality Since 1972

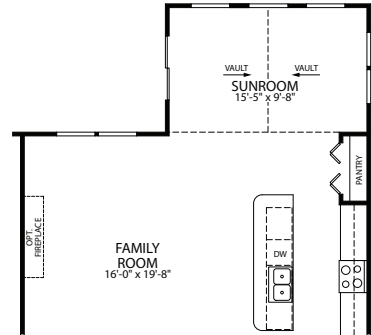
# FIRST FLOOR LAYOUT



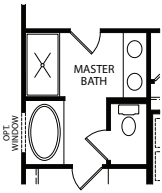
Opt. 12' Sunroom with Opt. Fireplace



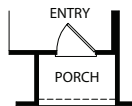
Opt. Chef's Kitchen



Opt. 16' Sunroom with Opt. Fireplace

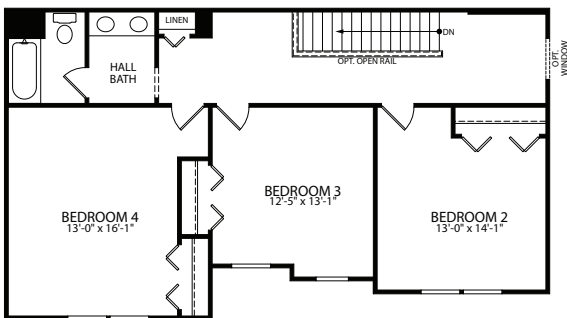


Opt. Deluxe Master Bath

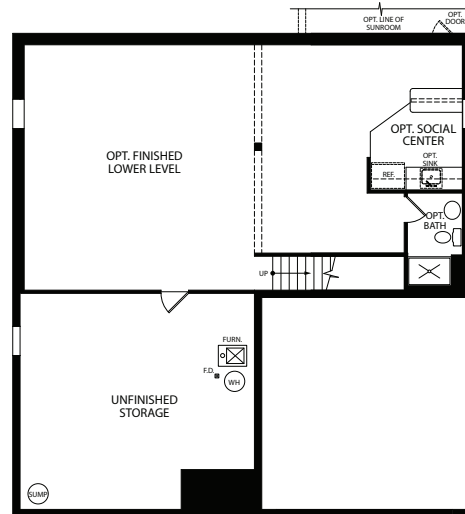


Opt. Covered Porch

# SECOND FLOOR LAYOUT



# LOWER LEVEL LAYOUT



# THE KNOXVILLE

Elevation A Americana Home Collection

- 4 Bedrooms, 2.5 - 3.5 Bathrooms
- 2,322 - 3,252 SQ FT
- 2 Car Garage
- First Floor Owner Suite



Visit [marondahomes.com](http://marondahomes.com) for more information. Ask your New Home Specialist for details about additional options to this floor plan to meet your unique lifestyle and needs. Floor plans and elevations are artist's renderings for illustrative purposes and not part of a legal contract. Features, sizes, options, and details are approximate and will vary from the homes as built. Optional items shown are available at additional cost. Maronda Homes reserves the right to change and/or alter materials, specifications, features, dimensions and designs without prior notice or obligation. ©2018 Maronda Homes, Inc. All Rights Reserved. 4/18