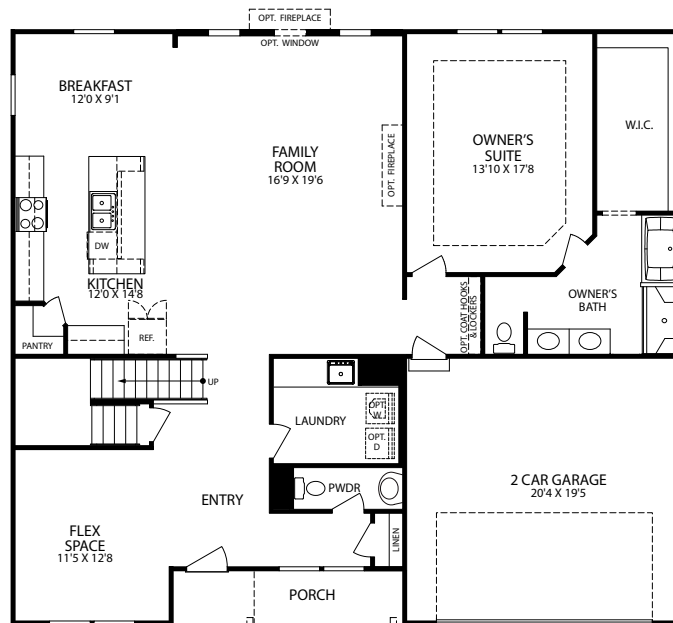




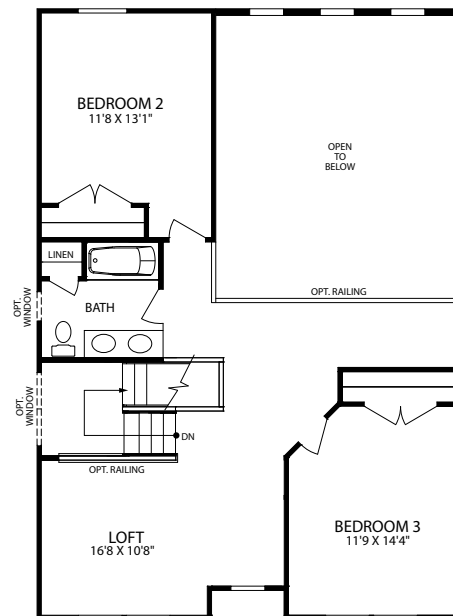
*Optional Victorian with Partial Brick Front*



*Optional Siding Front*



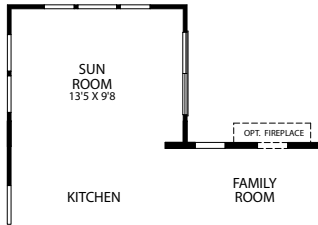
SECOND FLOOR



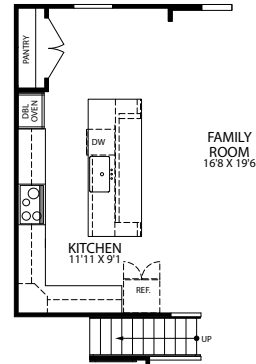
- 3-5 Bedrooms
- 2 Car Garage
- 2.5-4.5 Bathrooms
- 2,604-4,114 Finished Sq. Ft.



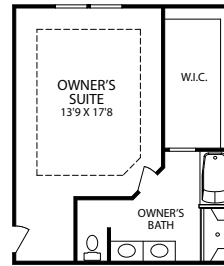
Opt. First Floor Sunroom



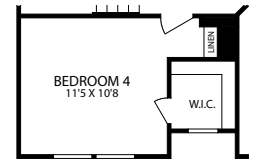
Opt. Gourmet Kitchen



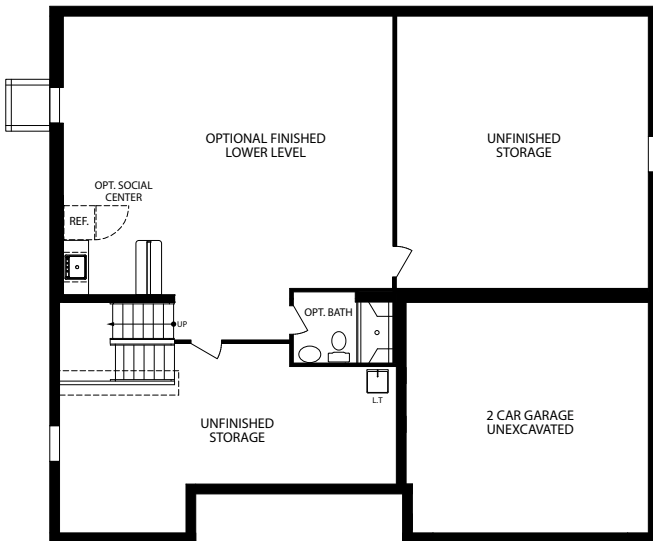
Opt. Second Floor Master Suite



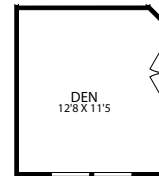
Opt. Bedroom 4 ILO Loft



Opt. Finished Lower Level



Opt. Den ILO Flex



Opt. Executive Bath

